

# GETTING STARTED

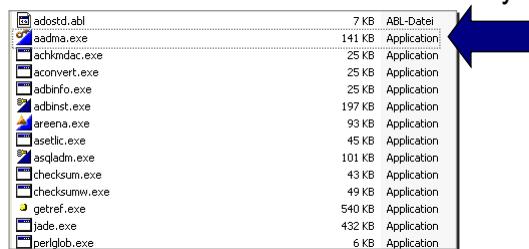
## ADOxx Development Environment - STARTUP



1. Start Administration Toolkit from the Windows START Menu



2. Start Administration Toolkit from the File Directory



## ADOxx Development Environment - STARTUP



1. Login into Administration Toolkit

Username: **Admin**  
 Password: **password**  
 DB: **adoxxdb**

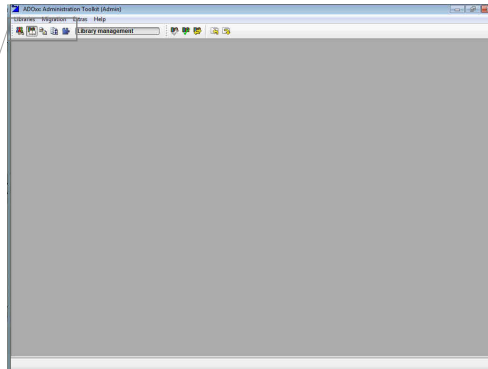
2. Notes for login:  
 Default User is called "Admin" and has administration rights, so additional users can be created  
 Default password is called "password" and is displayed as "\*\*\*\*\*"  
 Default database is called "adoxxdb", in case a different database name has been created during installation procedure, simply use that database name instead of the default setting.



## Administration Toolkit - Components

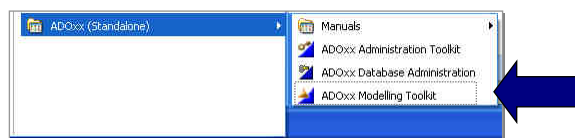
Debug User needed in the database to start modelling toolkit for validation  
U: debug  
P: debug  
Create user in "User Management" component for testing purposes

Development Environment:  
Library Management  
Component

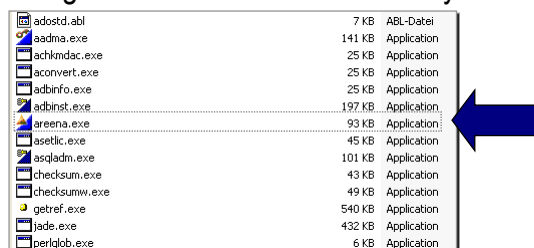


## ADOxx Debug Modelling Tool - STARTUP

1. Start Modelling Toolkit from the Windows START Menu



2. Start Modelling Toolkit from the File Directory



## ADOxx Debug Modelling Tool - STARTUP

1. Login into Modelling Toolkit  
Username: **Admin**  
Password: **password**  
DB: **adoxxdb**
2. Notes for login:  
Default User is called "Admin" and has administration rights, additional users that has been created can also be used  
Default password is called "password" and is displayed as "\*\*\*\*\*", users with different password use their own password.  
Default database is called "adoxxdb", in case a different database name has been created during installation procedure, simply use that database name instead of the default setting.



In case of any questions, please contact

**download@adoxx.org**