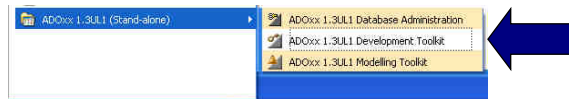


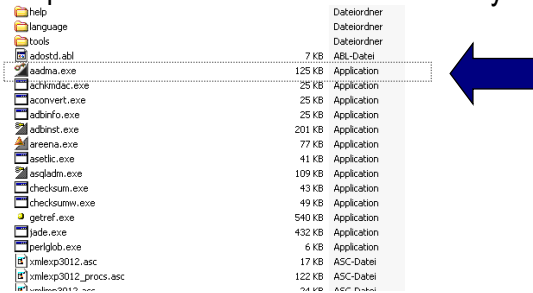
GETTING STARTED

ADOxx Development Environment - STARTUP

1. Start Development Toolkit from the Windows START Menu



2. Start Development Toolkit from the File Directory



ADOxx Development Environment - STARTUP

1. Login into Development Toolkit

Username: **Admin**
 Password: **password**
 DB: **adoxxdb**

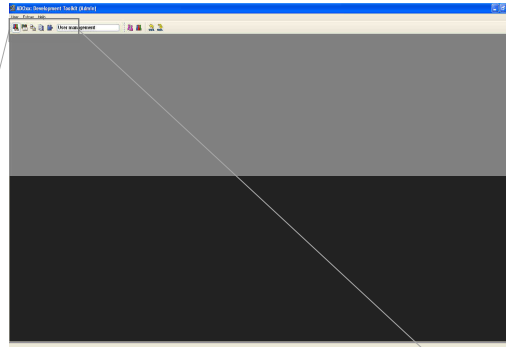
2. Notes for login:
 Default User is called "Admin" and has administration rights, so additional users can be created
 Default password is called "password" and is displayed as "*****"
 Default database is called "adoxxdb", in case a different database name has been created during installation procedure, simply use that database name instead of the default setting.



Development Toolkit - Components

Debug User needed in the database to start modelling toolkit for validation
U: debug
P: debug
Create user in "User Management" component for testing purposes

Development Environment:
Library Management
Component

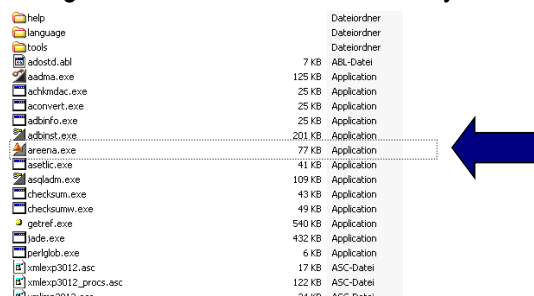


ADOxx Debug Modelling Tool - STARTUP

1. Start Modelling Toolkit from the Windows START Menu



2. Start Modelling Toolkit from the File Directory



ADOxx Debug Modelling Tool - STARTUP

1. Login into Modelling Toolkit
Username: **Admin**
Password: **password**
DB: **adoxxdb**
2. Notes for login:
Default User is called "Admin" and has administration rights, additional users that has been created can also be used
Default password is called "password" and is displayed as "*****", users with different password use their own password.
Default database is called "adoxxdb", in case a different database name has been created during installation procedure, simply use that database name instead of the default setting.



In case of any questions, please contact

download@adoxx.org