

ADOxx.org Webinar

Installation of the ADOxx Metamodelling Platform



<https://www.adoxx.org/live/installation-guide-15-new>





Welcome

Nedim Rifatbegovic

Moderator of this Webinar
Installation Walkthrough



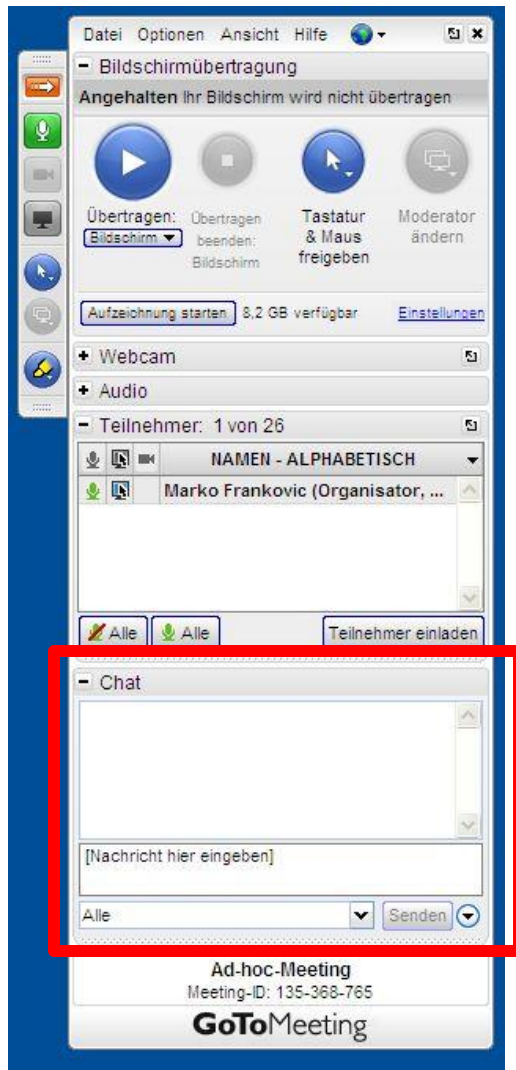
Mateusz Dziezic

Discussion of common issues
Questions and Answers



Contact: info@adoxx.org

Webinar Interaction



- All Microphones muted
- Please type your questions into the chat window



Webinar Agenda

- **Installation Guide**
 - **ADOxx Installation Process**
 - **Get Started with ADOxx**
- **Common Installation Issues and Solutions**
- **Question and Answers**

ADOxx Installation Walkthrough



Prerequisites for the Installation



1. ZIP Package
2. ADOxx License

The screenshot shows a web browser window with the ADOxx website navigation menu at the top. The main content area is titled 'Installation Code' and contains a form for requesting an installation code. The form includes fields for 'First Name', 'Last Name', 'Email Address', 'Affiliation', and 'Inquiry'. There are 'Submit' and 'Reset' buttons at the bottom of the form. The text above the form reads: 'Please provide your personal details below to receive an installation code for your download.'

Licence Number Sheet

ADOxx version 1.5 English for Windows
(Database System Microsoft SQLServer Express)

Customer Number:

Licence Number:

1..capital letter I 0..capital letter O
1..small letter a 0..numeric character zero
1..numeric character one

Configuration:

- Stand-alone
- Concurrent Use

Maximum Number of Concurrent Users:

Remarks:

Licence Key for ADOxx 1.5 requested through www.adoxx.org

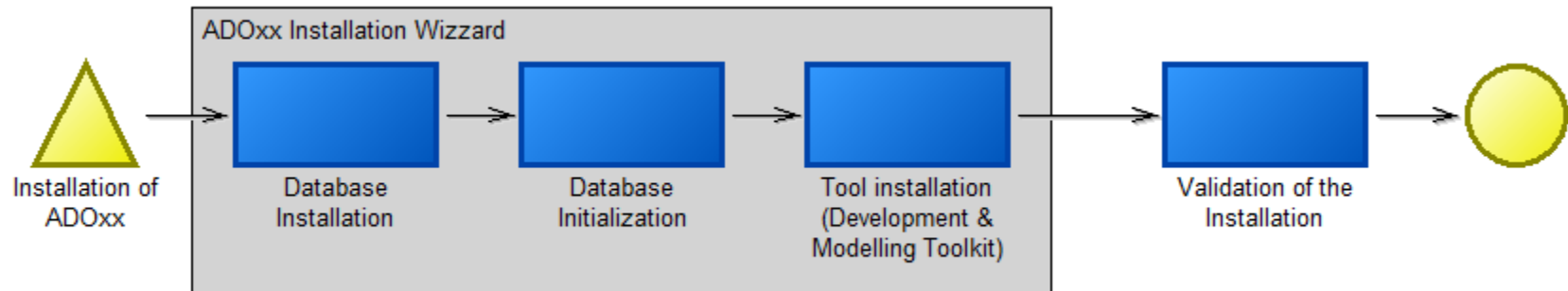
BOC Group
26.07.2016

	dbinfo	File folder	
	readme	File folder	
	setup	File folder	
	SQLExpress	File folder	
	tools	File folder	
	autorun.ico	IfanView ICO File	336 KB
	autorun.inf	Setup Information	1 KB
	readme.htm	Chrome HTML Docum...	1 KB
	setup.exe	Application	1.466 KB

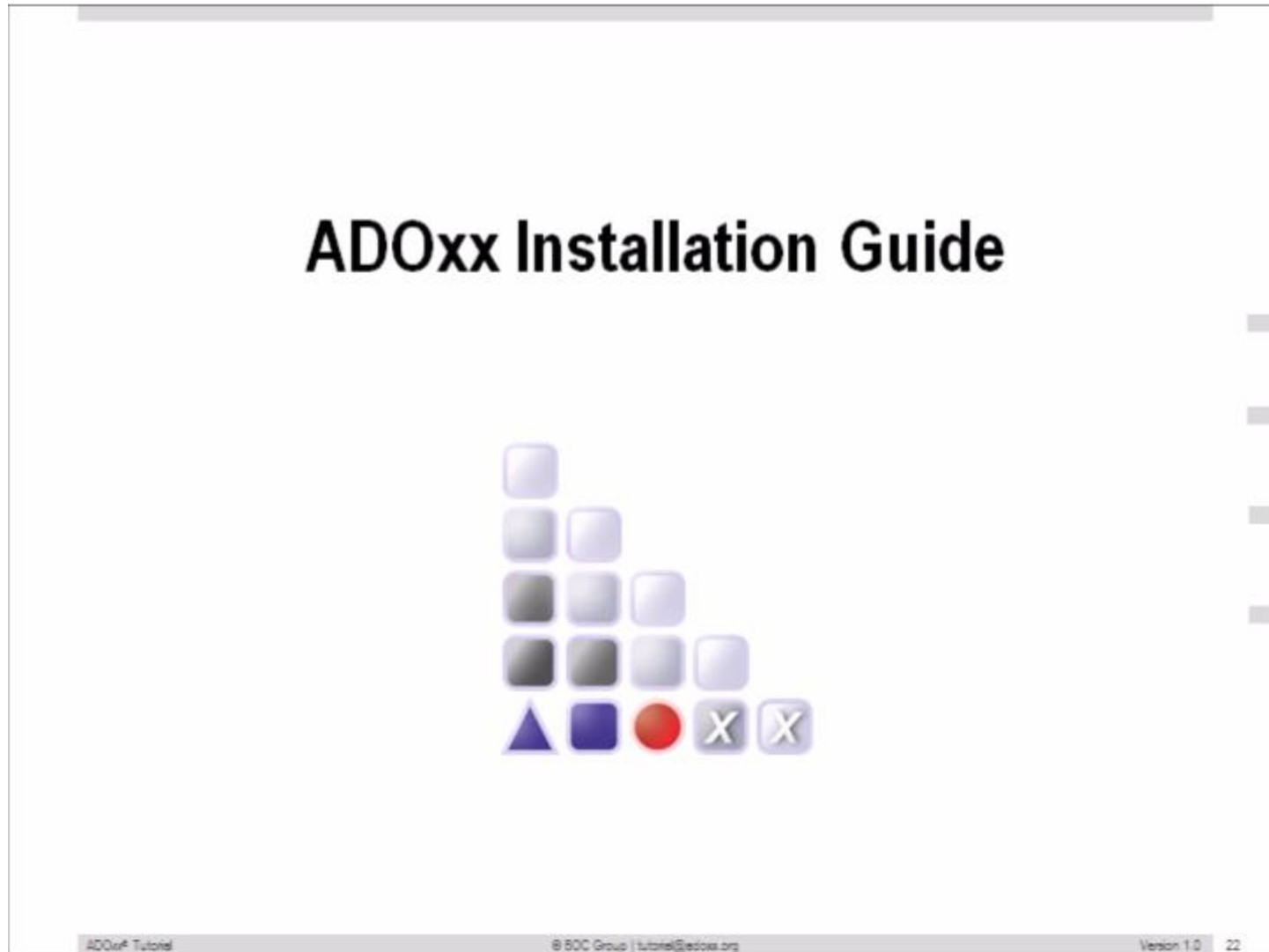


Installation Guide, Hardware and Software Requirements

- Installation Guide: <https://www.adoxx.org/live/installation-guide-15>
- Hardware and Software Requirements: https://www.adoxx.org/live/hardware_software-requirements-15



ADOxx 1.5: New Installation Guide



Link: <https://www.adoxx.org/live/tutorial>

Login to the ADOxx Development Toolkit and Modelling Toolkit



FAQ: https://www.adoxx.org/live/faq/-/message_boards/message/934612

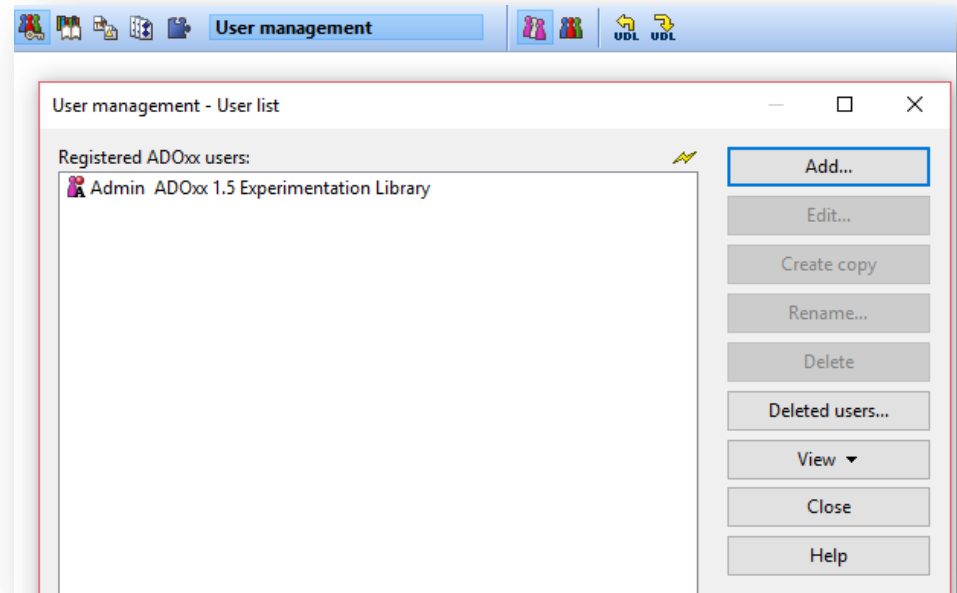
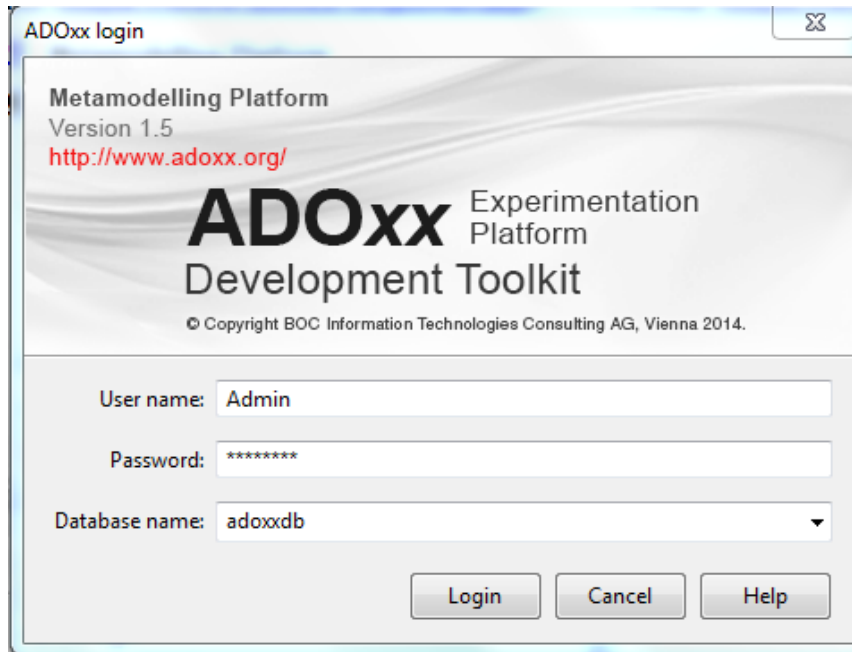
Login to Development Toolkit:

1. Username: **Admin**
2. Password: **password**

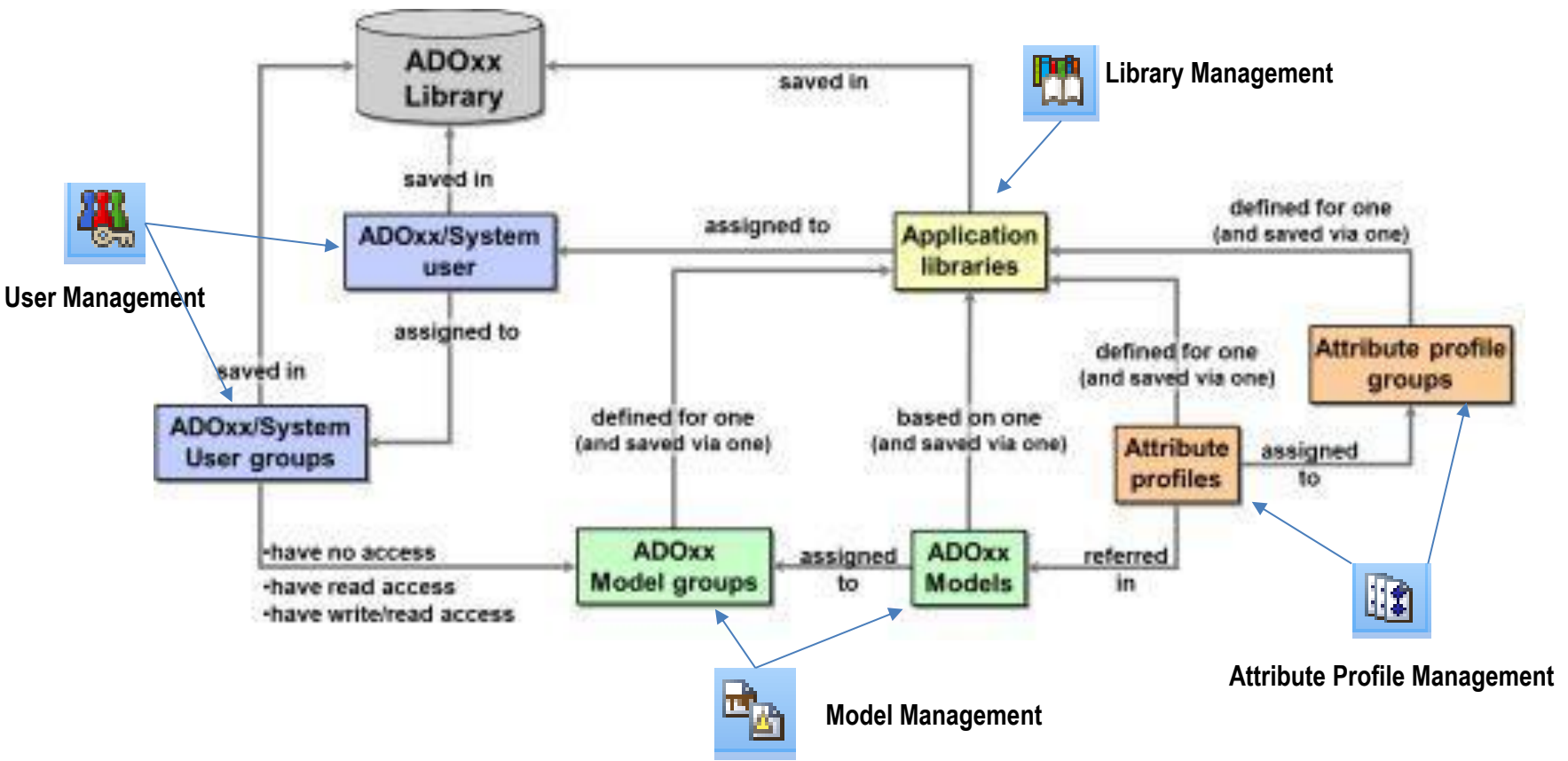
FAQ: https://www.adoxx.org/live/faq/-/message_boards/message/934639

Create Modelling Toolkit User:

1. Start ADOxx Development Toolkit
2. Access User Management
3. Create new user by selecting „ADD“ and providing required information



Login to the ADOxx Development Toolkit and Modelling Toolkit

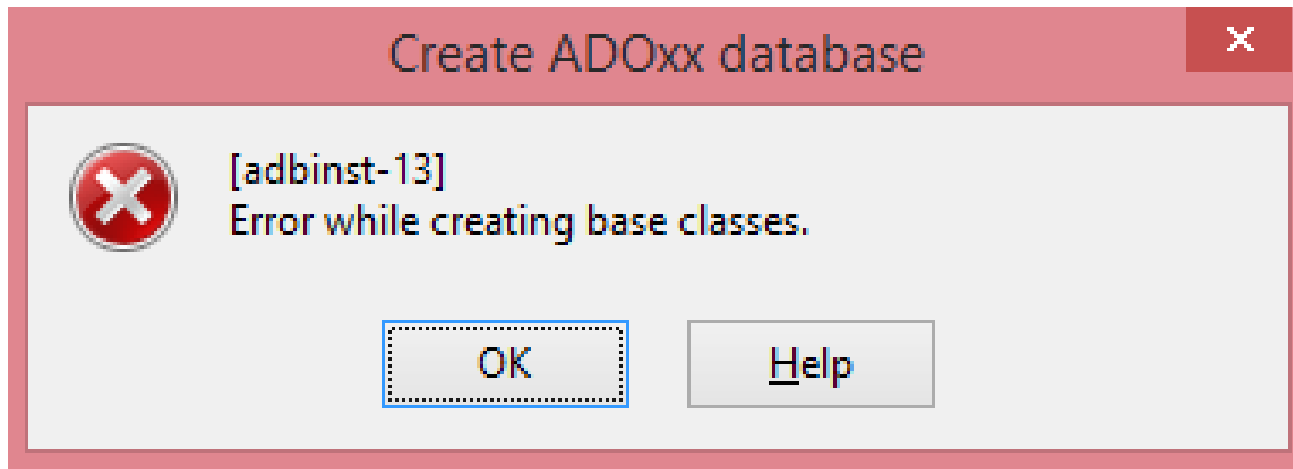


Link: <https://www.adoxx.org/live/-/theory-definitions>

Common Installation Issues



Why do I see a [adbinst-13] or a [alogin-22] error message?

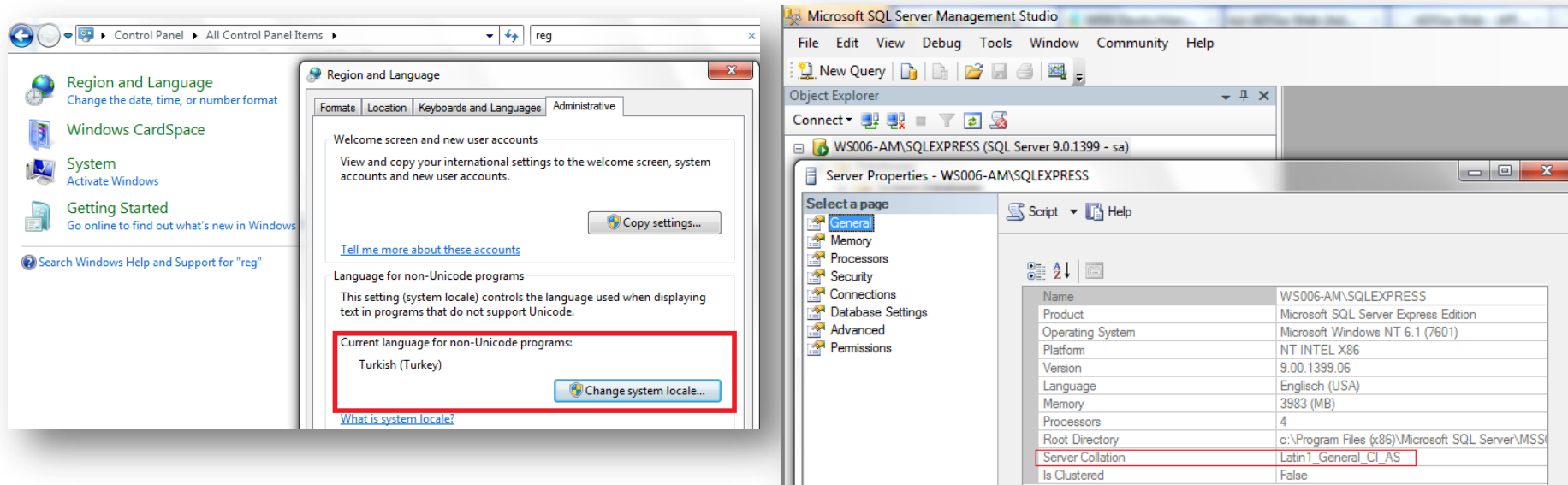


Why do I see a [adbinst-13] or a [alogin-22] error message?



Solution 1:

Adapt the non-unicode settings to the Server Collation.



FAQ: https://www.adoxx.org/live/faq/-/message_boards/message/248340

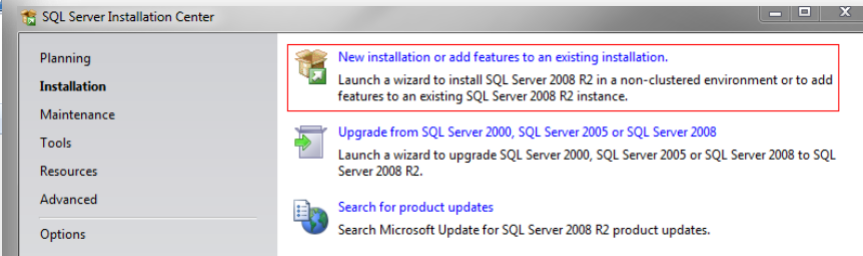
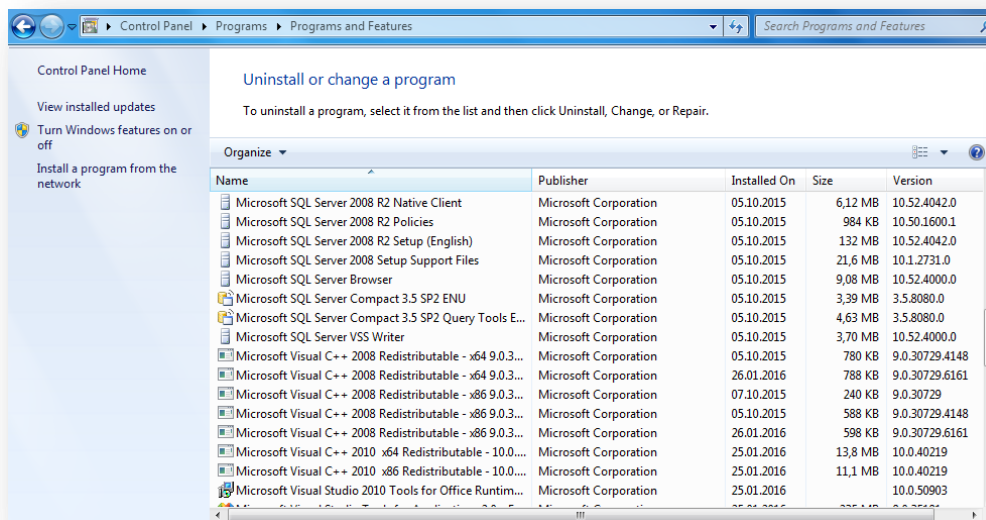
FAQ: https://www.adoxx.org/live/faq/-/message_boards/message/578135

Why do I see a [adbinst-13] or a [alogin-22] error message?



Solution 2:

Remove current instance installation and create a new instance ADOXX15EN with a suitable collation.



FAQ: https://www.adoxx.org/live/faq/-/message_boards/message/248340

FAQ: https://www.adoxx.org/live/faq/-/message_boards/message/578135

Why do I see a [adbinst-13] or a [alogin-22] error message?



Solution 3:

Use a virtual English Microsoft environment on your PC that will close all issues related to the language settings.



FAQ: https://www.adoxx.org/live/faq/-/message_boards/message/935518

Why does Microsoft SQL Server fail to install?



ADOxx 1.5 (English) Stand-alone Setup Setup



Failed to install Microsoft SQL Server (instance ADOXX15EN). Please check for errors and try again.

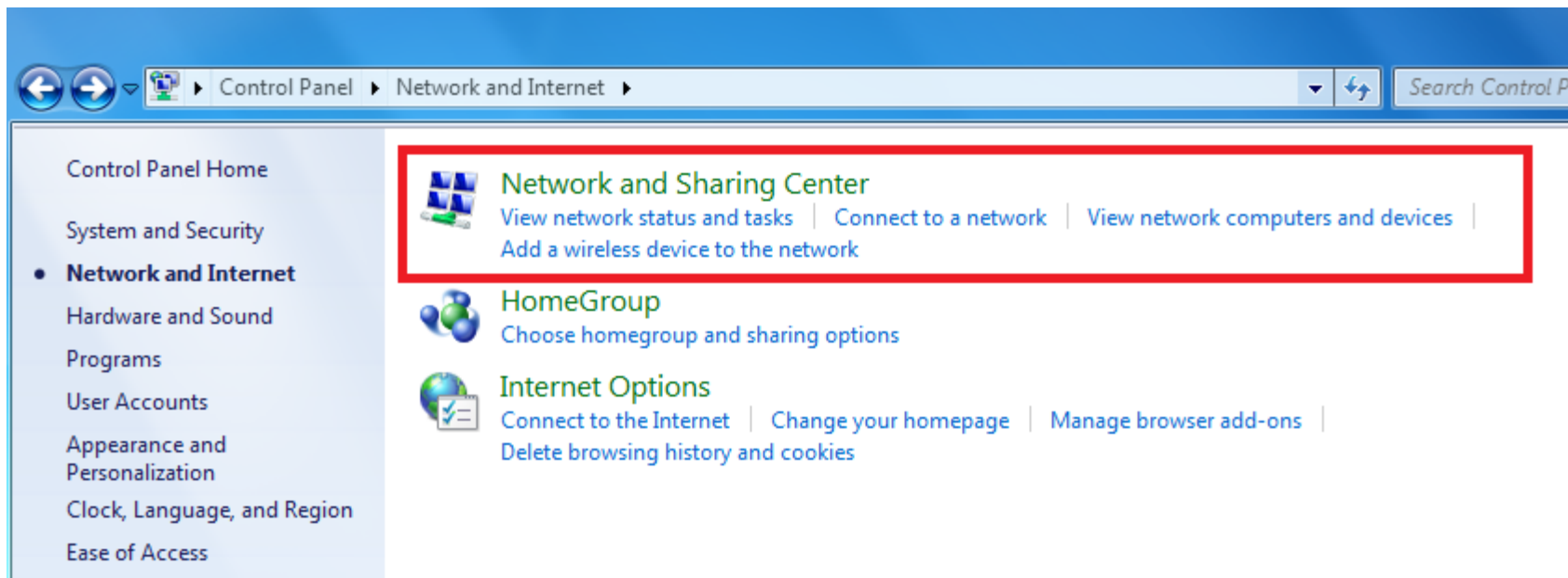
OK



Why does Microsoft SQL Server fail to install?

Solution 1:

Check Internet access during the installation of the Microsoft SQL Server instance.



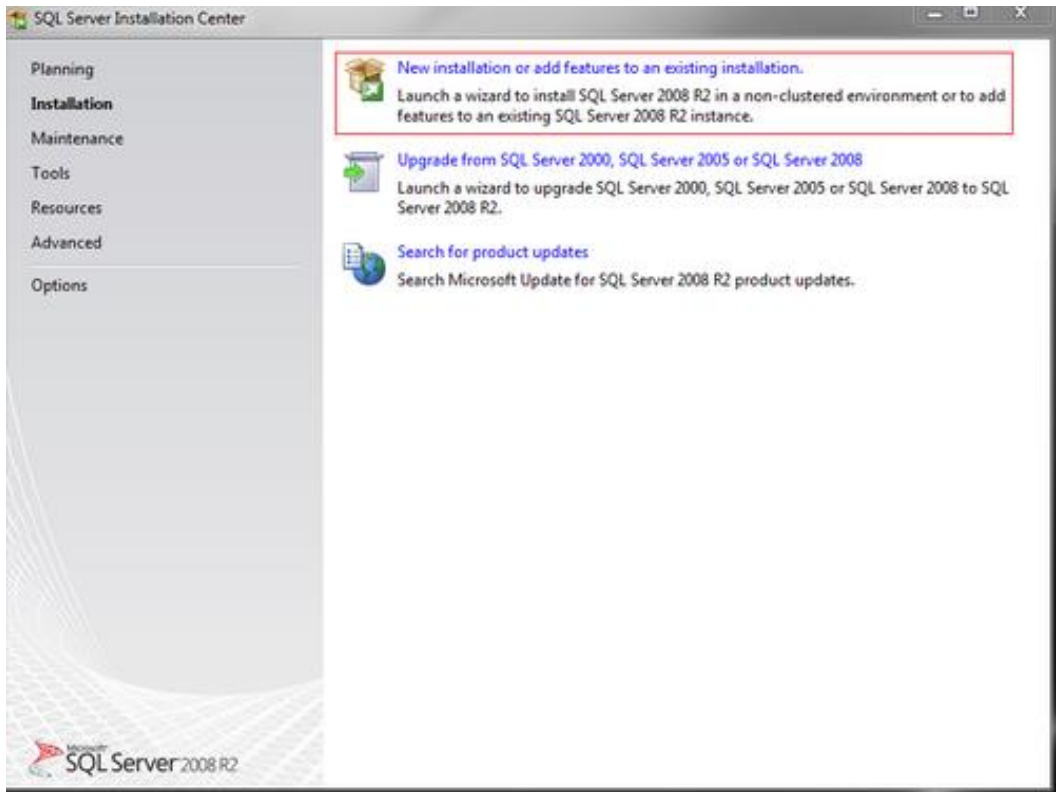
FAQ: https://www.adoxx.org/live/faq/-/message_boards/message/936531



Why does Microsoft SQL Server fail to install?

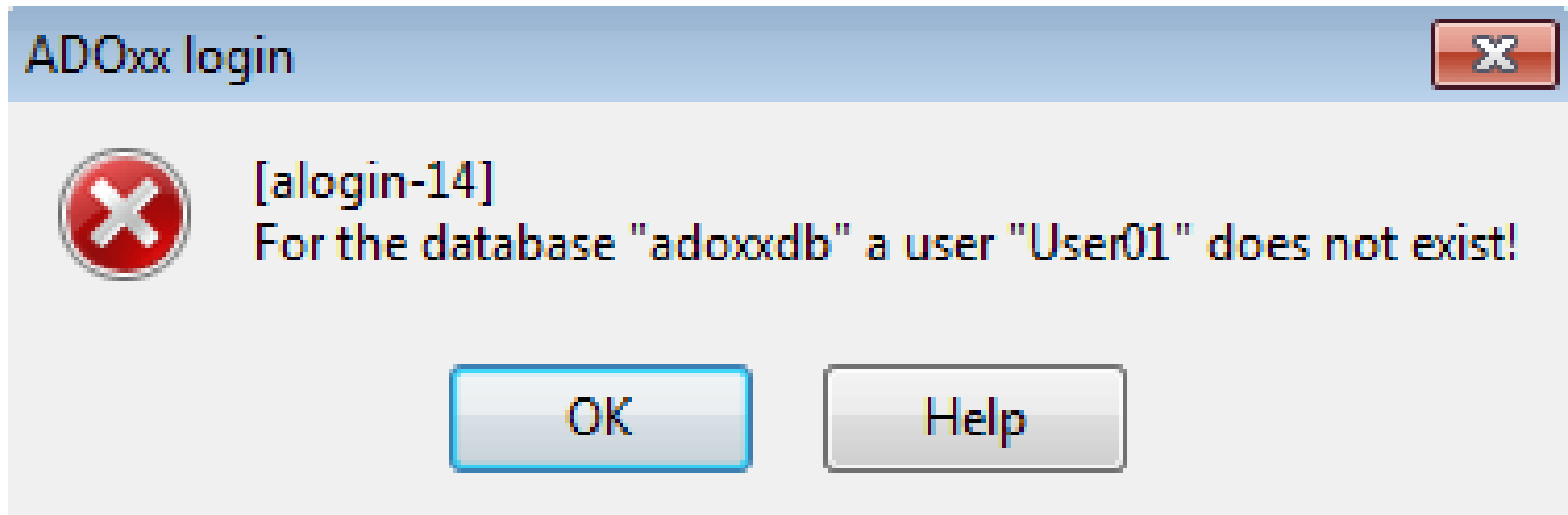
Solution 2:

Manual SQL Server Download and installation.



FAQ: https://www.adoxx.org/live/faq/-/message_boards/message/936531

Why do I get an [alogin-14] error?





Why do I get an [alogin-14] error?


Solution

1. Log in to the ADOxx Development Toolkit
2. Create a new user in the ADOxx Development Toolkit

Hello,

How can I login to the ADOxx Development Toolkit after the installation?

[Sign in to vote.](#)

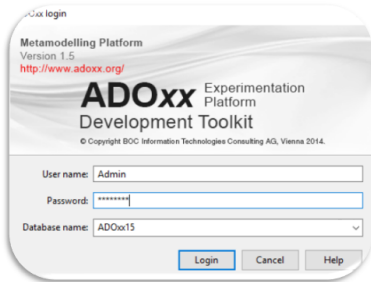

Nedim Rifatbegovic
 Rank: New Member
 Posts: 6
 Join Date: 7/7/15
[Recent Posts](#)

RE: How to login in the ADOxx Development Toolkit?
 7/6/17 2:03 PM as a reply to Anonymous.

In order to login to the ADOxx Development Toolkit, you have to use the standard username and password:

- Username: **Admin**
- Password: **password**

In case you want to login paralel in the ADOxx Development Toolkit, and ADOxx Modelling Toolkit please take a look at this FAQ ([LINK](#))




Dear ADOxx.org Team,

I wanted to login at the Modelling toolkit, but it was not possible while I was logged in in the Development Toolkit. Is it possible to be logged in in both Toolkits at the same time?

Thank you!
 Best regards!

[Sign in to vote.](#)


Nedim Rifatbegovic
 Rank: New Member
 Posts: 6
 Join Date: 7/7/15
[Recent Posts](#)

RE: How to login at the same time in the Development and the Modelling Tool
 7/6/17 1:54 PM as a reply to Anonymous.

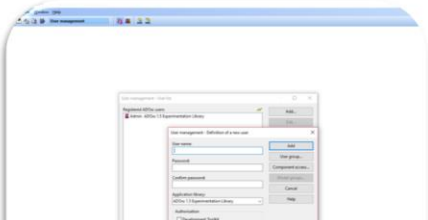
Hello,

In order to be logged in in the Development Toolkit and Modelling Toolkit at the same time, you have to create a new user.

How to create a new user?

In order to create a new user, take a look at the tutorial: [Create Modelling Toolkit User](#)

If you have any more questions, please don't hesitate to contact us anytime!
 Best regards and thank you for your question!



FAQ: https://www.adoxx.org/live/faq/-/message_boards/message/934639

FAQ: https://www.adoxx.org/live/faq/-/message_boards/message/934612

How do I install ADOxx on a non-Windows operating system?



Is it possible to use ADOxx having a non-Windows operating system?

7/7/17 7:59 AM

Hallo!

I just wanted to install ADOxx to try it out, but I realized that ADOxx can only be installed on a Windows operating system. However, I am using the Ubuntu 16.04 operating system. Does anyone know if it is possible for me to install ADOxx anyway?

FAQ: https://www.adoxx.org/live/faq/-/message_boards/message/935518



How do I install ADOxx on a non-Windows operating system?

Solution:

In case you are not using a Windows operating system and want to install ADOxx, you can use a virtual Microsoft Windows environment on your PC:

1. Virtualisation Environment Installation on the host operating system
Virtualization software example: VirtualBox (Oracle)
2. Installation of Microsoft Windows as a guest operating system
Step by step walkthrough on the VirtualBox as an example:
<https://www.adoxx.org/live/walkthrough-oracle-vm-virtualbox>
3. Standard ADOxx installation
ADOxx 1.5: <https://www.adoxx.org/live/installation-guide-15-new>

FAQ: https://www.adoxx.org/live/faq/-/message_boards/message/935518

How do I install ADOxx on a non-Windows operating system?



FAQ: https://www.adoxx.org/live/faq/-/message_boards/message/935518



Questions?



Community News



Application Scenario

Take a look at our new application scenarios:



Cloud: BPaaS Business Process as a Service

Using domain-specific business processes as a mediator for business and IT-Cloud alignment.



Open Data and IoT: Energy Efficient Use of Building

A model-based approach to manage parallel data streams of sensors measuring energy consumption

[Link: www.adoxx.org/live/development-spaces](http://www.adoxx.org/live/development-spaces)

Meta Modelling Platform



LoLA Petri Net Verification

Implementation of a webservice wrapper for the LoLA. To enable integration of the LoLA functionality, the LoLA tool has been compiled from source code and a wrapper implementation to enable SOAP and REST interaction is made available.



ADOxxWEB SIMULATION

The Remote Simulation Service is an Open Source REST service, able to simulate a Business Process and general enough to be extended for the simulation of any kind of model type.

[Link: www.adoxx.org/live/building-blocks](http://www.adoxx.org/live/building-blocks)



In case of any questions after the webinar, please contact:

info@adoxx.org

Like us on Facebook:

<https://www.facebook.com/ADOxxORG/>



Follow us on Twitter

Twitter:

twitter.com/ADOxxORG



Join our LinkedIn Group

LinkedIn: <https://www.linkedin.com/groups/509220>

