

ADOSCRIPT TRIGGERS



Library Attribute "External binding"

Through the library attribute „External binding“ it is possible to extend the available ADOxx functionality. For every component a library specific menu item can be defined, which is bind to a executable script. Besides in the external coupling the coupling to software of other producers can be configured.

```
ON_EVENT "AppInitialized"  
{  
  #do smthg.  
}
```

Ex. Event

```
ITEM "ADOxx-Standard-Methode"  
  acquisition:"~Hilfe"  
  modeling:"~Hilfe"  
  analysis:"~Hilfe"  
  simulation:"~Hilfe"  
  evaluation:"~Hilfe"  
  importexport:"~Hilfe"  
  
CC "Application" GET_PATH "adostd.hlp"  
START ("\" + path + "\"")
```

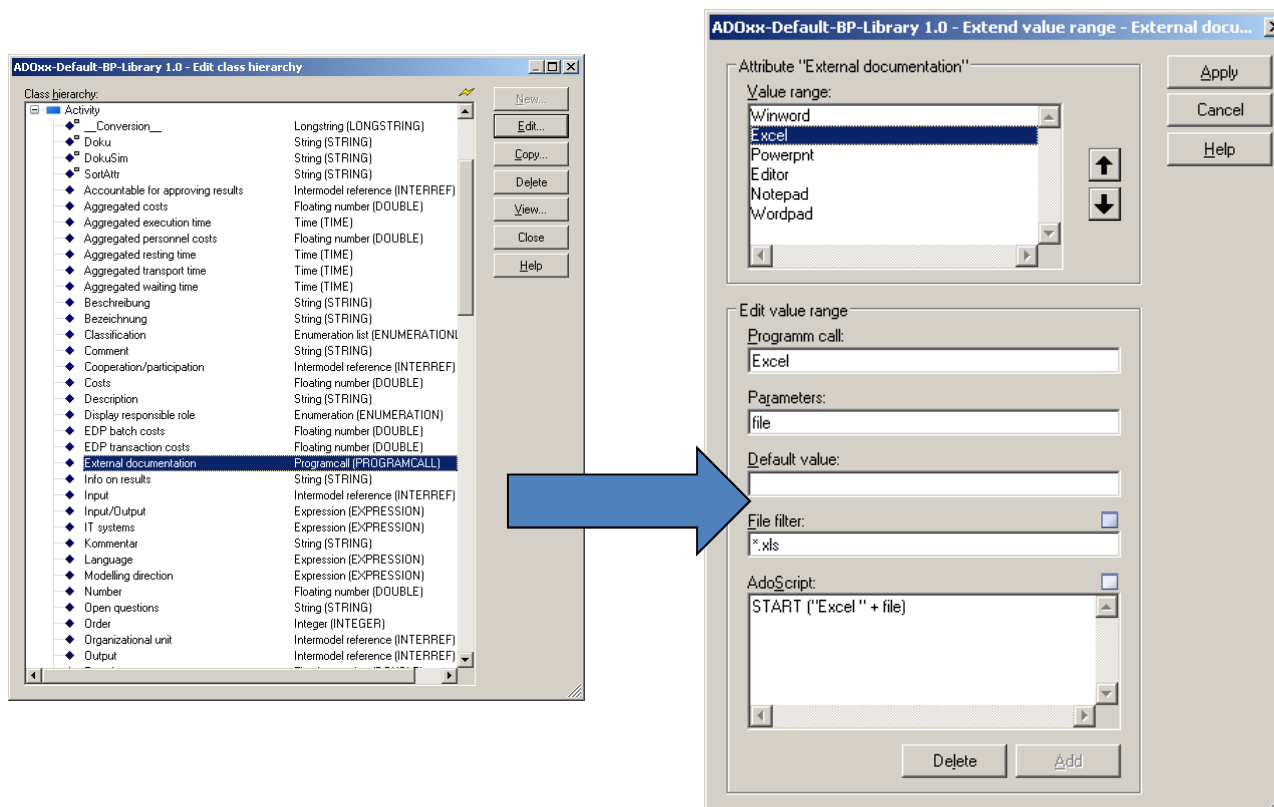
Ex. Menu

AdoScript via Notebook



Attribute type PROGRAMCALL

Execution of AdoScript commands over program calls attributes in the notebook of objects.



Automatically over the command prompt



AdoScript integration over command line parameter on startup of tools:

```
ECHO CC "AdoScript" FREAD file:("batchupd.adoscript")
EXECUTE (text) CC "Application" EXIT |
arena -ubatchupd -pbatchupd -dADOxxdb -ssqlserver -e
```

Command Line Parameter

- ▶ -uUser
- ▶ -pPassword
- ▶ -dDatabase
- ▶ -sDBServerSystem
- ▶ -eInlineHandOver vs. File Execution

AdoScript Shell Window



Debug/Development Facility

```
ITEM "Shell window" modeling:"Extras,,
```

Menu Entry

```
SET endbutton:"ok"
```

Script Code for Shell Window

```
WHILE (endbutton = "ok")
```

```
{
```

```
  CC "AdoScript" EDITBOX text:(adoscript)
```

```
  title:"Enter the code you want to test..."
```

```
  oktext:"Go!"
```

```
IF (endbutton = "ok")
```

```
{
```

```
  SET adoscript:global:(text)
```

```
  EXECUTE (text)
```

```
}
```

```
}
```

